



Eseta™

Architectural LED Wall Sconce

Area lighting for outdoor
wall-mounted applications with
OMNI Lens™ visual comfort optics

LEOTEK®

Eseta's subtly distinctive form has a versatile architectural aesthetic that makes it an appealing choice for retrofit applications.



Holmes Bridge, PA

Citrus Heights, CA



Walnut Creek, CA



Eseta™ Series offers two sizes to deliver the lumen packages and appropriate housing scale for multiple applications

ES1

Lumen packages up to 9,800 lumens.



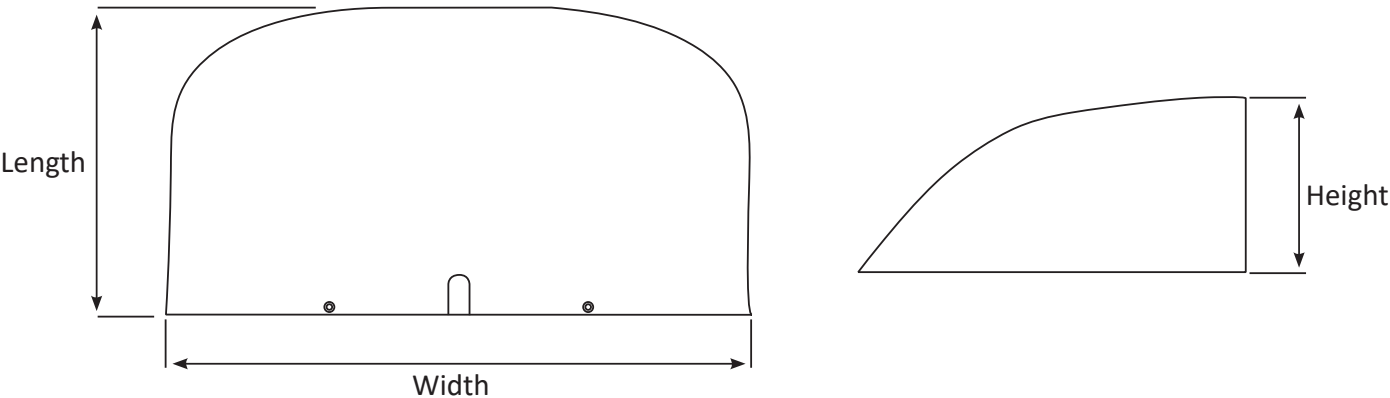
ES2

Lumen packages up to 19,500 lumens.



Dimensions

Model	Width	Length	Height	Weight
ES1	16.8" [428mm]	12.1" [307mm]	5.4" [138mm]	9.9 lbs. [4.5 kg]
ES2	23.1" [588mm]	12.1" [307mm]	5.4" [138mm]	13.15 lbs. [5.96 kg]



Eseta™ Offers Visual Comfort and Performance



Glare control Featuring the Innovative OMNI Lens™
Visual Comfort Optical System
The cover lens micro-structure controls glare while delivering high-performance light distribution



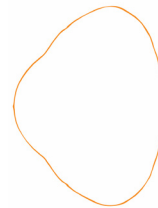
High efficiency
up to 110 lumens/watt



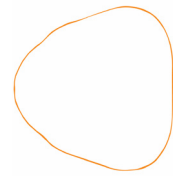
Engineered to deliver high lumen maintenance
Quality high-power LEDs run with well-managed drive currents and highly efficient heat dissipation



Available with Two targeted distributions using precise individual optics



Wide Throw
(WT Option)



Forward Throw
(FT Option)

Eseta™ Provides Dependability and Durability



Built-in Reliability
Each unit is 100% performance tested after a strenuous 2-hour burn-in period



Built for Harsh Environments
Fully sealed to IP66 Rating and tested to withstand 5000 hrs. salt spray exposure per ASTM B117



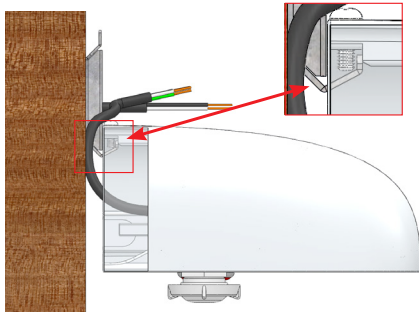
Vandal Resistant
Impact resistance to the highest industry standard IK10 Rating



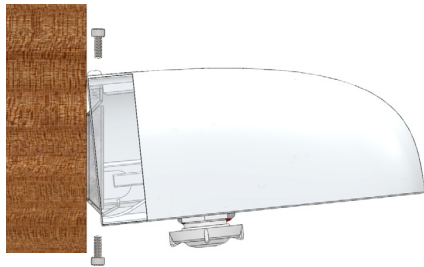
Standard 10-Year Warranty



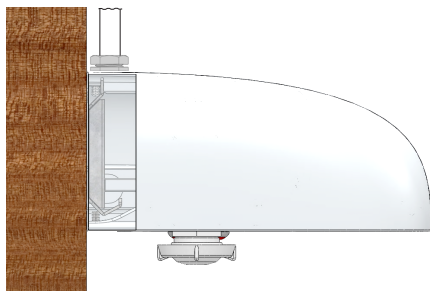
Smart Design for Quick Installation



During wiring, the luminaire is hung on the bottom of the back plate.



After wiring, the luminaire is simply hung from the top of the back plate and secured with inset, discreet set screws. Eseta is IP66-Rated, so no sealant is needed.



Eseta™ offers optional mounting methods for surface conduit with knockouts at the top and bottom of the housing on the ES1 and on all four sides of the ES2.

Eseta is available in four popular standard paint colors: Gray (GY), White (WH), Dark Bronze (DB) or Black (BK) .



Consult factory for custom finishes.



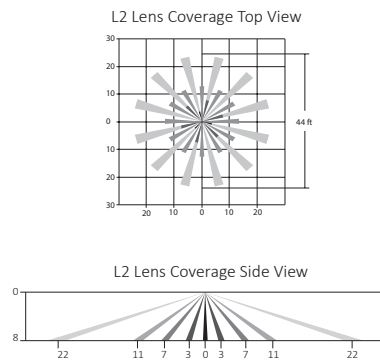
Eseta™ Motion Sensor Options



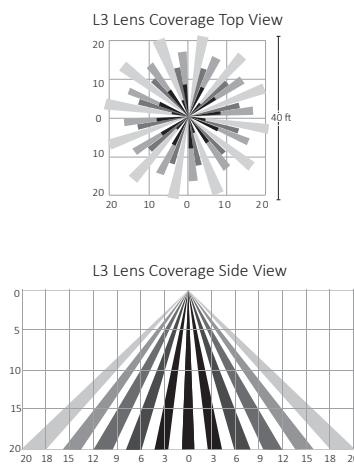
- Multi-cell, multi-tier Fresnel lens with a 360° view detects unobstructed motion
- Field-programmable custom settings
- Can be specified with emergency battery system (EM Option)
- California Title 24 Control compliant

Sensor Ranges:

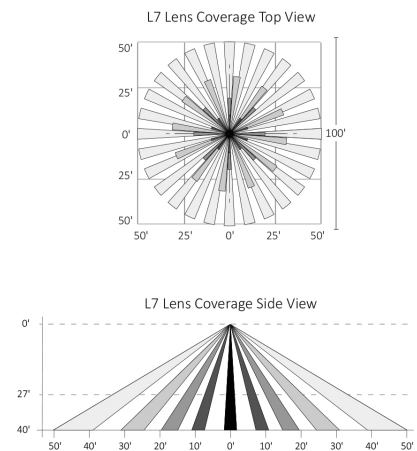
Up to 10' (MSL2 Option)



Up to 20' (MSL3 Option)



Up to 40' (MSL4 Option)



Eseta™ Emergency Battery System

(EM & EM2 Options)

Fits inside standard housing

Compatible with motion sensor:

Emergency battery and motion sensor can be specified together.

UL 924 listed and NFPA 101 compliant: :

Underwriters Laboratories listed for emergency lighting. Meets National Fire Protection Association requirements for egress lighting.

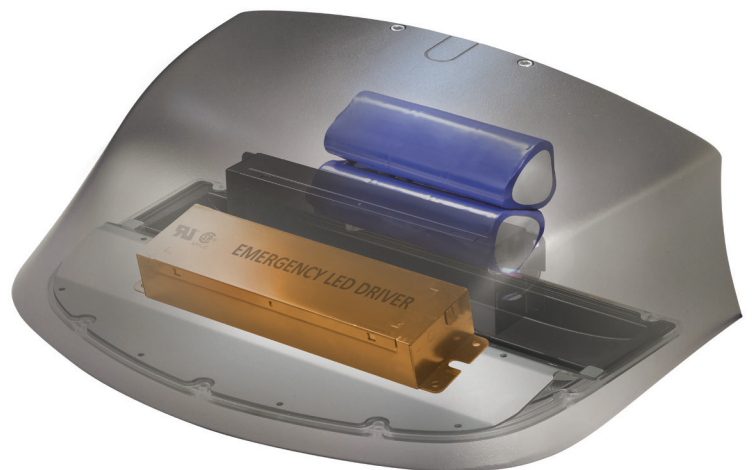
Warm or Cold-weather rated systems

for temperature range rating of

EM: -4°F to 140°F (-20°C to +60°C)

EM2: 32°F to 140°F (0°C to +60°C)

90-minute operation: Nominal 1900 lumens for ES1 and 2300 lumens for ES2 for a minimum of 90 minutes operation when AC power fails.



Eseta™ Twist-Lock Photocontrol & Wireless Node Receptacle

(PCR7-CR Option Available on ES2 Only)

PCR7-CR Option (ANSI C136.41 Compliant)

- Factory-wired for “control-ready” 1-10V dimming with wireless node (by others)
- Also accepts standard photocontrol



Twist-Lock Control Compatibility

Option Code	Receptacle	Wireless Dimming Node Control-Ready	Compatible with Standard Photocontrol
PCR7-CR	7-Wire	Yes	Yes

Button-type Photocell

(PC Option)

An optional photocell is mounted unobtrusively at the top of the luminaire.



UL listed 120-277V option

CSA listed 347V option

ANSI C136.24 compliant

Visit LEOTEK.com to learn more about our innovative LED Lighting products



GreenCobra®

The GreenCobra Series has become the industry standard for cities, utilities and DOTs throughout North America with hundreds of thousands of units installed. The superior optical performance, innovative mechanical features that facilitate installation and maintenance, and the familiar daytime form all contribute to the GreenCobra's success. Four models deliver the lumen packages and appropriate housing scale for multiple mounting heights: GreenCobra Jr. (GCJ), GreenCobra Midsize (GCM), GreenCobra (GCL) and GreenCobra (GC2).



Arieta®

Suited for numerous applications, including parking lots, campuses, office complexes, streets and public parks, Arieta™ is universally retrofittable. Arieta is available in two housing sizes (AR-13 & AR-18) and a wide range of lumen packages to match the visual scale of multiple pole mounting heights.



E-Cobra™

Perfectly suited for area lighting applications, the E-Cobra™ provides a wide variety of lumen packages and light distributions. It features tool-less entry and a removable power door for ease of maintenance, and the patent-pending internal heat management system assures long LED life and minimal lumen depreciation without external heat fins.

LEOTEK Technology Integration Group

LEOTEK's Technology Integration Group (TIG) was established to address customer's unique requirements which cannot be effectively addressed with a standard cataloged product. The group consists of mechanical, optical, thermal and electrical experts who have extensive experience in lighting technology and applications. The members of our dedicated team of professionals are experts at assessing your needs and providing customized product solutions.

If you have a lighting problem, we would like to discuss a solution with you. Please contact your local LEOTEK sales representative with your project requirements.



LEOTEK Electronics USA LLC, located in California's Silicon Valley, is celebrating over thirty years as an LED lighting manufacturer, and is a leading supplier of LED street lights worldwide. Globally recognized as a pioneer in light-emitting diode technology, and with millions of LED products installed worldwide, the company has a historical legacy of proven performance. LEOTEK offers innovative LED lighting products for applications encompassing traffic, transit, street, and area lighting. LEOTEK street and area lighting products are assembled in the USA.

1955 Lundy Ave., San Jose, CA 95131  408.380.1788